

Burrasca

MOAYERY NIA

JULIEN NOLIN GIAN LUCA PORCILE

BRANDON YOUNDT HAMED ZARRINKAMARI DARRAN ANDERSON FEDERICA ANDREONI THERESE EBERI MASSIMILIANO ERCOLANI ENRICO FORESTIERI ARTHUR FRANCOIS

MITCHELL GOW ELEM

WORLD

No. 05

Burrasca is a cultural association based in Genova which focuses on thinking and realizing different activities: from independent architectural publications to exhibitions and other editorial and graphic projects.

This association, created as a sort of think tank, aims to be a platform of discussion by which we want to propose reflections, information and activities about Architecture under a large range of meanings. Each Burrasca's publication tackles one theme. Contributions are collected by a call for submissions. Burrasca's intent is then to make emerging relationships appear.

The interpretation is both graphic and editorial and it is built up through illustrations and extra content. We encourage inventive and original contributions from every person, even independent thinkers and people not related with any academic environment. This open structure provides us with the most diverse kind of contributions, succeeding in representing our fast-changing world. In the same way we give a great importance to illustration, which is in our thoughts a powerful means able to communicate Architecture to a wide audience.

MEMBERS

Andrea Anselmo
Federica Antonucci
Alice Baiardo
Ilaria Cazzato
Daniele Di Fiore
Chiara Federico
Enrico Galdino
Giulia Garbarini
Francesco Garrone
Elisa Giuliano
Luigi Mandraccio
Carlo Occhipinti
Giacomo Pala
Francesco Pestarino
Federico Sarchi
Greta Scarzo
Stefano Stecchelli

info@burrasca.eu
www.burrasca.eu

EDITORIAL BOARD

Andrea Anselmo
Alice Baiardo
Luigi Mandraccio
Giacomo Pala
Greta Scarzo

ART DIRECTION

Ilaria Cazzato
Chiara Federico

ILLUSTRATIONS

Daniele Di Fiore
Francesco Garrone
Stefano Stecchelli

POSTER ARTWORK

Julien Nolin

CONTRIBUTORS

Darran Anderson
Federica Andreoni
Therese Eberl
Massimiliano Ercolani
Enrico Forestieri
Arthur François
Mitchell Gow
Eleni Han
Samuel Kapasa
Won Chul Kim
Marta Kowalczyk
Jun Li
Moayery Moayery Nia
Gian Luca Porcile
Brandon Youndt
Hamed Zarrinkamari

PUBLISHED BY

Burrasca, based in
Genova, IT

Printed in November 2016

ISSN: 2531-5145
ISBN: 9788894046649

Every effort has been made to trace and contact copyright holders. If there are any inadvertent omissions we apologise to those concerned, and ask that you contact us so that we can correct any oversight as soon as possible.

All rights reserved. The copyright remains with Burrasca Association and the authors and artists. No part of this publication may be reproduced in whole or part without written permission from the publishers.

05.

Therese Eberl, Mitchell
Gow, Marta Kowalczyk -
The Fifth World: The New
Social Order Defined by
Heterotopias

10. Massimiliano Ercolani -
NYCWF - New York City Water Farm

13. Jun Li - Death Cycle

Won Chul Kim -
Manifesto of the
Erotic Architecture

20.

22.

Darran Anderson - Imaginative
Compendium. An interview by
Luigi Mandraccio

Eleni Han - Digi-topos
31.

34.

Gian Luca Porcile
Beautiful Dystopias:
About Architecture and Videogames

36.

Samuel Kapasa -
The Jazz City

38.

Federica Andreoni -
Fifth World.
A Nocturnal map

42.

Moayery Moayery Nia,
Hamed Zarrinkamari -
Total Migration

45.

Brandon Youndt - Extinction migration

Enrico Forestieri -
Island: a Pragmatic Utopia

48.

Arthur François - The Calais Jungle: a
new world in the interstices of the old
one

54.

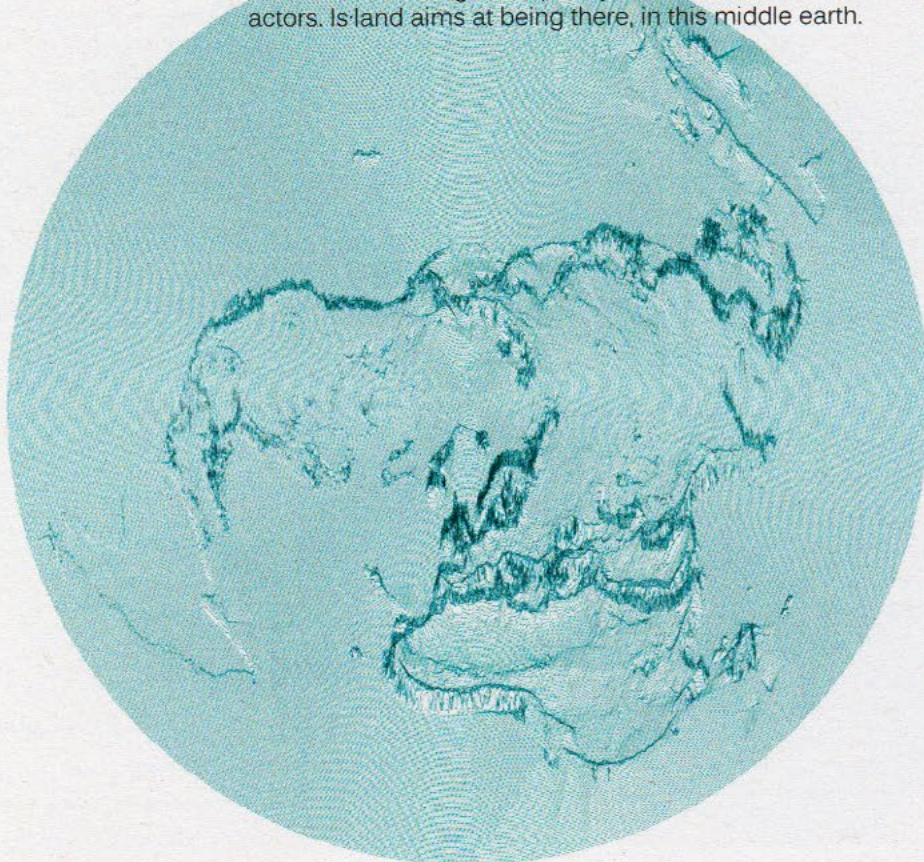
Enrico Forestieri

IS-LAND: A PRAGMATIC UTOPIA

UTOPIA RELOADED

Visionary utopias of the Sixties and Seventies, fluctuating between idea(lism) and (mega)structures were blown away by the first oil crisis because of their reduced adaptability and scalability.

Since the Nineties, more urgent material constraints and important technological advances have influenced and driven a new series of pragmatic, opportunistic, impure projects. Such projects reject the previous naïf schematism and they are now able to manage complexity, different scales and multiple actors. Is-land aims at being there, in this middle earth.



“Separate to protect” has so far been the environmentalists’ answer to the environmental crisis.

FROM ENVIRONMENTAL-ENVIRONMENTALISTS CRISIS TO POST-ENVIRONMENTAL MODELS

The Earth is a reduced space of negotiation. Up until recently, environmental problems did not patently assume conflicting characteristics because of the resources surplus and the reduced anthropic pressure.¹

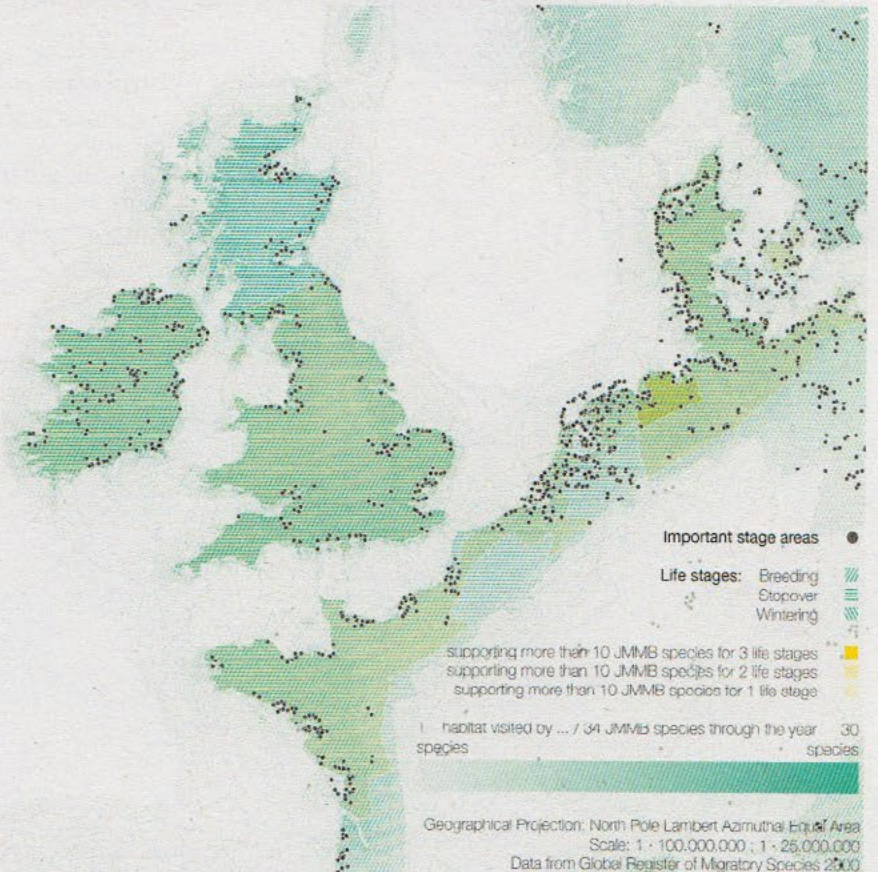
“Separate to protect” has so far been the environmentalists’ answer to the environmental crisis. During the last decades, the extent of protected areas has been growing exponentially,² nevertheless, the environmental problem persists and worsens; this could be a sign that, once again, the “Indian reservation” strategy is not working properly.



Central Europe coast is an heterogeneous interchange area supporting at least 2 bird life stages for more than 10 JMMB species through the year.

1. Brad Ewing, David Moore, Steven Goldfinger, Anna Oursler, Anders Reed, and Mathis Wackernagel, *Ecological Footprint Atlas 2010* (Oakland: Global Footprint Network, 2010), 10-27.

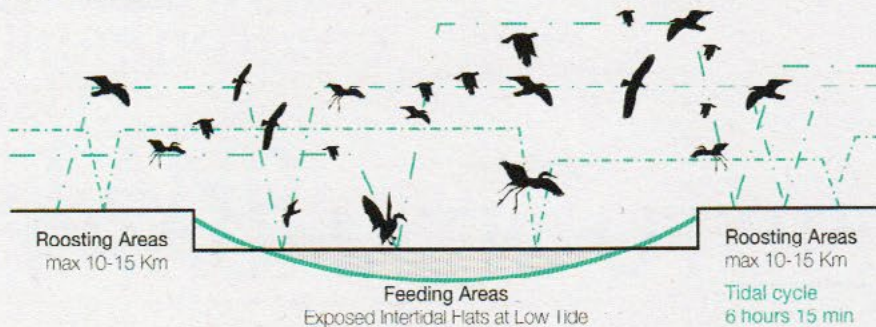
2. IUCN, and UNEP-WCMC, *The World Database on Protected Areas (WDPA)* (Cambridge, UNEP-WCMC, 2010) and www.protectedplanet.net (2011).



Total presence of 34 JMMB species

Dependence on WSA habitat
Percentage on total flyway population

Daily cycle: synchronization of tidal fluctuations, spatial occupancy and daily activities



Is-land is not intended as a self-sufficient monad: on the contrary, it enhances and strengthens relationships between regional scattered communities.

LEARNING FROM MIGRATORY BIRDS

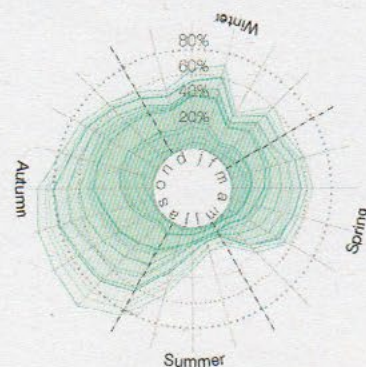
A natural park, though wide, still remains a zoo at the landscape scale, designed and tailored on sedentary animals. The insular strategy can only partially guarantee the potential qualities of the ecosystems, because harmful volatile or soluble components simply cross legal constraints.

Migratory birds, with their use of the extended territories, stress clearly the limits of such a strategy, but at the same time, they unintentionally point out a model where habitats boundaries are less univocally defined and where intensity and duration of environmental pressure is linked to energetic parameters and to cyclic, temporal constraints.

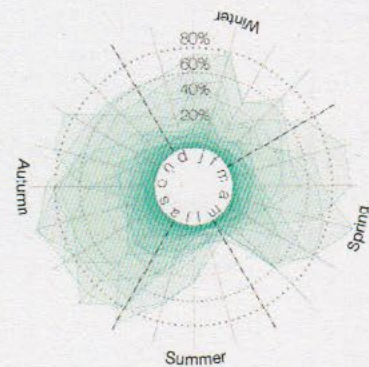
Their cyclic nomadism represents a refined strategy³ of reversible management of territorial resources. This model is much more sophisticated than the sedentary one, where moving is the *extrema ratio* in case of end/lack of resources. In the current moment of environmental-ist crisis, could people reconsider their predominant sedentary condition in favour of a more fluid model? What can we learn from migratory birds?

Annual cycle: phenology analysis for 34 JMMB migratory species monitored at Wadden Sea

Based on Wadden Sea Secretariat data, 2009



Total presence of 34 JMMB species



Dependence on WSA habitat
Percentage on total flyway population

IS-LAND: A MOVING LANDSCAPE THROUGH THE WADDEN SEA REGION

The Wadden Sea Region (WSR) is a one million hectares natural park between the Netherlands and Denmark. It is a geographical and functional spot for migratory birds, a hyper-protected area and a region with evident socio-economic imbalances.⁴ The project suggests a post-environmental⁵ scenario of cohabitation with humans and socialized non-humans,⁶ based on the constant negotiation of Spaces, Time, Cycles.

It questions the prevailing sedentary attitude of humans, looking at birds cyclic nomadism as a smart strategy for managing natural resources. Beyond an *ecotouristic* segregated model, it rethinks of WSR as a "mixing chamber." It softens the neatness of the actual protected area limit; it promotes a greater porosity of the "sensible area" borders; it increases, diversifies and overlaps heterogeneous activities taking advantage of the cyclical variations at WSR; it promotes an energetic strategy based on a redundant grid of scattered elements.

Within this regional scale plan, Is-land is a "mobile harbour:" a transient, functional landscape that operates in the Wadden sea tidal area, generating a brand new hybrid context for human and non-human cohabitation. Unexpected synergies and virtuous circles spring among local flora and fauna and a varied nomadic community composed of scientific researchers, tourists, farmers, entrepreneurs, old and young *flaneurs*.

1. Brad Ewing, David Moore, Steven Goldfinger, Anna Oursler, Anders Reed, and Mathis Wackernagel, *Ecological Footprint Atlas 2010* (Oakland: Global Footprint Network, 2010), 18-27.

2. IUCN, and UNEP-WCMC, *The World Database on Protected Areas (WDPA)* (Cambridge, IUNEP-WCMC, 2010) and www.protectedplanet.net (2011).

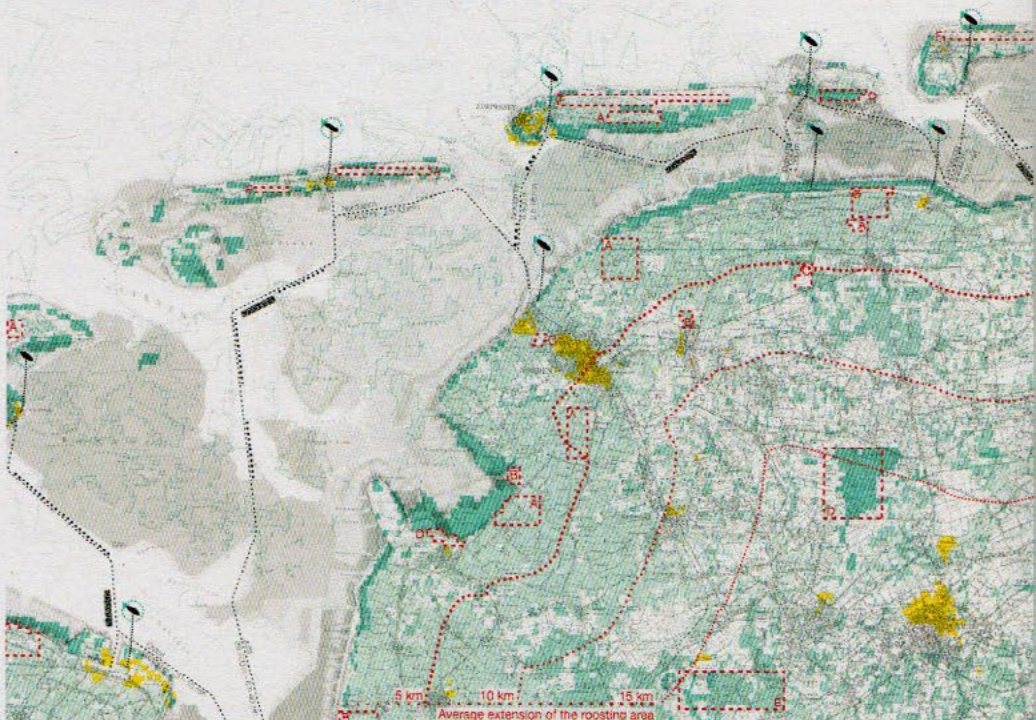
3. Among others: Theunis Piersma, "Hop, Skip, Jump? Constraints on Migration of Arctic Waders by Feeding, Fattening and Flight Speed" originally published in Dutch in *Limosa* 60 (1987), 185-194; Deborah Buehler, and Theunis Piersma, "Travelling on a budget: predictions and ecological evidence for bottlenecks in the annual cycle of long-distance migrants," *Philosophical Transactions of the Royal Society, Biological Sciences*, Royal Society Publishing 363 (2008), 247-266; Lukas Jenni, and Michael Schaub, "Behavioural and Physiological Reactionsto Environmental Variation in Bird Migration: a Review", in Peter Berthold, Eberhard Gwinner, and Edith Sonnenschein ed., *Avian Migration* (Berlin: Heidelberg, Springer-Verlag, 2003), 155-171.

4. Prognos, "Sector specific analysis and perspectives for the Wadden Sea Region," in *Wadden Sea Forum Report No. 8* (Berlin: Prognos AG, 2004), 197-200.

5. Andrea Branzi, "For a Post-Environmentalism: Seven Suggestions for a New Athens Charter," in Mohsen Mostafavi, Gareth Doherty ed., *Ecological Urbanism* (Zurich: Lars Müller Publishers and Harvard University, 2010), 110-113.

6. Bruno Latour, *We Have Never Been Modern* (Cambridge: Harvard University Press, 1993).

7. Cedric Price, "Potteries Thinkbelt, Life Conditioning" in *Architectural Design* 36 (October 1966), 483-497 and 483-484.



pended between landscape and
merged portion and its slow
visual presence as if it were an
entary island of the Friesland
sponds to and takes advantage
duced wave motion behind
cal contingencies—such as
it flows through ever changing
nsive agriculture, shrinking cities,
ation Meccas, dense urban
e than five million people along five
pastal ribbon.

self-sufficient monad: on the
rengthens relationships between
ities. On top of that, it establishes
environmental interdependence
lands, it receives material and
and in exchange of material and

ed inside. It accepts agricultural
d areas within the mixing chamber
teries thanks to a Magenn rotors
s itself in a temporary plug—an
guest communities.

different degrees of autonomy
s-land." Floating mobile units
own trips independently from
and their continuous deliberate
ated sprawl⁷—turns into a real time
ropic pressure on WSR. Inside the
scape mixes together public and
ries of conveyor belts connect
ower deck, merging seamlessly the

The site plan shows a residential development with various buildings and infrastructure. Key features include:

- Buildings:** Several buildings are labeled, including 'School Building', 'Gymnasium', 'Cafeteria', 'Library', 'Nursery', 'Kindergarten', 'Elementary School', 'Middle School', 'High School', 'Juniata High School', 'Juniata College', 'Juniata University', 'Juniata State College', 'Juniata State University', 'Juniata State College of Podiatric Medicine', 'Juniata State College of Health Sciences', 'Juniata State College of Business', 'Juniata State College of Education', 'Juniata State College of Arts and Sciences', 'Juniata State College of Engineering', 'Juniata State College of Agriculture', 'Juniata State College of Forestry', 'Juniata State College of Nursing', 'Juniata State College of Social Work', 'Juniata State College of Criminal Justice', 'Juniata State College of Law', 'Juniata State College of Medicine', 'Juniata State College of Dentistry', 'Juniata State College of Pharmacy', 'Juniata State College of Veterinary Medicine', 'Juniata State College of Podiatric Medicine', 'Juniata State College of Health Sciences', 'Juniata State College of Business', 'Juniata State College of Education', 'Juniata State College of Arts and Sciences', 'Juniata State College of Engineering', 'Juniata State College of Agriculture', 'Juniata State College of Forestry', 'Juniata State College of Nursing', 'Juniata State College of Social Work', 'Juniata State College of Criminal Justice', 'Juniata State College of Law', 'Juniata State College of Medicine', 'Juniata State College of Dentistry', 'Juniata State College of Pharmacy', 'Juniata State College of Veterinary Medicine'.
- Roads:** A road labeled 'Bike Lane' runs through the center of the plan.
- Parking:** A large parking lot is located in the center of the plan.
- Green Spaces:** Several green spaces are shown, including a large one in the center and several smaller ones around the buildings.
- Grid:** The plan is divided into sections by a grid of letters (A-M) and numbers (1-15).

